

Riverside Extension Phase 2A

The Riverside Extension Phase 2A project, from Sherman Street to Erie Street, also referred to as Martin Luther King Jr. Way Phase 2A (MLK P2A), is a continuation of the Riverside Extension Phase 1 project, located near the WSU campus. The purpose of the project is to provide vehicular and truck traffic an efficient transportation route that eliminates several safety issues and increases capacity into and out of the downtown area while passing along the south edge of the University District.

The project follows a previously approved alignment and is part of a larger master plan that has been adopted and approved by multiple agencies. The Riverside extension project series will be completed with the Phase 2B project, located from Erie Street to Perry Street, which is planned for construction in 2016. Construction of a segment of the Ben Burr trail between Erie Street and vacated Front Avenue is also included in future Phase 2B.

The MLK P2A project proposes construction of a new asphalt pavement street, utility infrastructure, storm drainage improvements, street lighting, street trees, and re-vegetation with native species. In lieu of sidewalks, the project proposes to construct a section of the Ben Burr trail to provide pedestrian circulation. The trail will be separated from the roadway traffic and aligned parallel to the Spokane River, allowing pedestrians through access with greater aesthetic experience. The right-of-way area for the sidewalk will be used to provide bike lanes and planting/storm water treatment areas.

Design goals include the extension of divided travel lanes with landscape medians containing sustainable landscape and street trees. Storm water swales will be included along the edge of roads, except where road gradients change and soil contamination issues are present. This storm water will be transported to evapotranspiration ponds at site specific locations. Street trees will be included and planted at adjacent property developments and along locations with separated sidewalks. Natural plantings will be placed where topography is challenging. These natural plantings will provide views to the Spokane River as well as screening of the adjacent active rail line. Tree plantings will receive initial establishment irrigation as well as permanent irrigation for the adapted street trees.

Generally, design guidelines will be followed with the exception of locations where physical constraints are impractical. The project area contains exposed basalt, which will limit the installation of landscaping.

Street improvements included by phase are described as follows:

Phase 2A – (WSU frontage section) boulevard street cross section with street-side storm water swales, street trees, and separated sidewalks on the north side of the street. The pedestrian walkway will terminate at the end of the now under construction WSU Clinic. Street trees in this location are large canopy species and will match the existing MLKJW planting. The boulevard island will be planted with narrower columnar trees, and ornamental shrubs and grasses to match the existing MLKJW planting.

Phase 2A – (Former Brown Building Supply) typical two-way street cross section with bike lanes, storm swales, and street tree plantings at the back of swales. As the proposed street ascends to the Brown

Building Supply, the side slopes will be supported using indigenous stone placed in an armor slope fashion. Trees in this location will be limited to either end of the armor slope, but additional native plantings will be included to provide a naturalized landscape. The naturalized plantings will allow the street user visual access to the adjacent river.

Phase 2A - (Former Brown’s Building) to Erie street will be a typical two-way street cross section with bike lanes, storm swales, and street tree plantings. This lower area shall have remedial voluntary clean-up. Storm water shall be piped through the clean-up locations to be collected in lined evaporation ponds for disposal.

All disturbed areas shall receive a drought tolerant grass mix, containing mostly Idaho Fescue and Sheep Fescue. Plantings around the evaporation ponds will be a mix of sedges, grasses, and native trees/shrubs such as service berry, sumac, and snowberry. Conifers within the project are will include Ponderosa Pine, and Douglas Fir (if water is available).

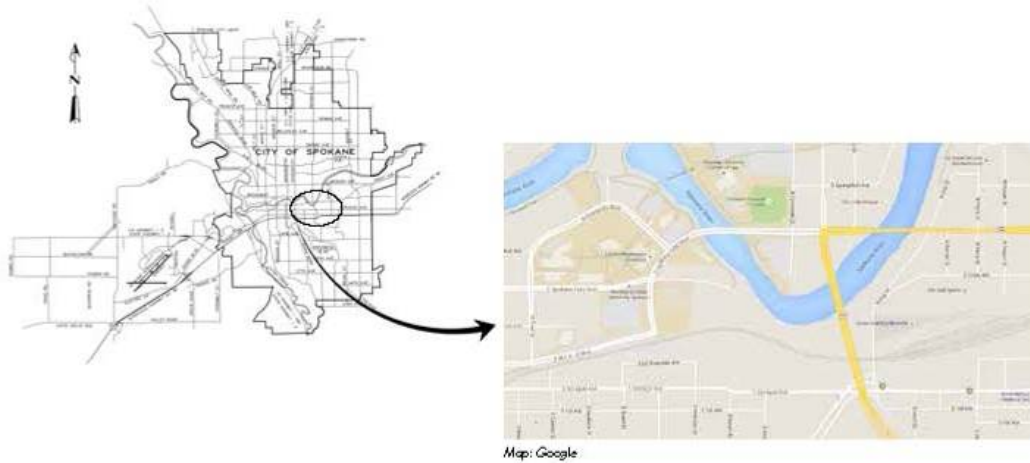
Phase 2B – (Erie St. to Trent Ave.) typical two-way traffic including various bypass and splitter islands that transition into a round-about traffic control circle. This section of the project is scheduled for later construction due to property acquisitions as well as other considerations. Improvements include bike lanes, storm swales, large canopy street trees, separated sidewalks, and a recognizable landscape improvement within the round-about circle. Artwork may be included in the central circle. This is dependent upon adjacent development agreements being considered.

Plantings in this section will include turf grass swales, large canopy and flowering canopy street trees, ornamental shrubs/grasses, and a variety of ground covers.

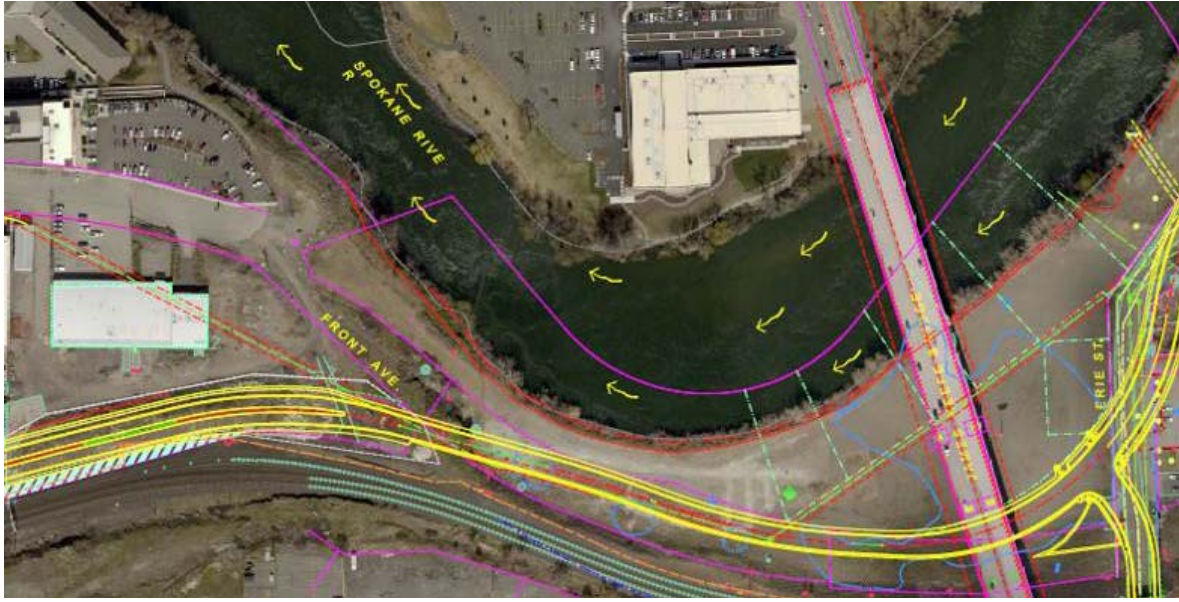
Reach	Bike Lane⁽²⁾	Sidewalk	Drainage Swale/Trees⁽³⁾	Roadside Barrier⁽¹⁾	Lanes
Sherman to East end of WSU See map ❶	5’ striped dedicated lane (one each side)	North Side only, separated from street by planting strip. BNSF Railroad on South side of roadway	Both sides	None	1 EB, 1 WB, Each side 20’ Wide (with shared 5’ Bike) & 10’ Wide Planted Median
East end of WSU to Erie St. See map ❷	5’ striped dedicated lane (one each side)	No Sidewalk on Either Side. Constructing portion of Ben Burr Trail alongside the river	Both sides	Installing Approx. 200’ of Guardrail	1 EB, 1 WB, Each side 17’ Wide (with shared 5’ Bike)

Notes:

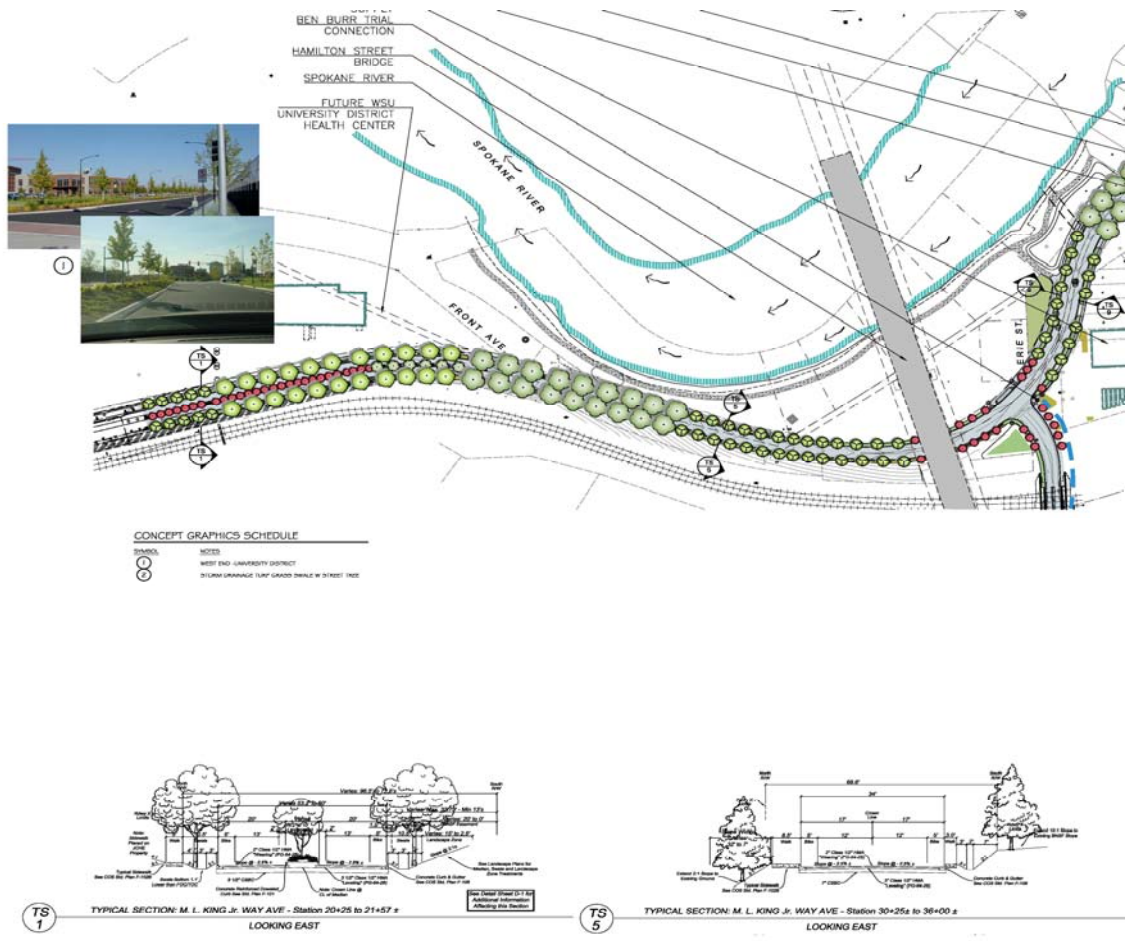
- This project's general layout and alignment is part of the Riverpoint Campus Master Plan (2009) prepared for the University District.
- This transportation corridor was funded using federal dollars for pedestrian safety.
- Phase 2 will be separated into additional phases due to ongoing property acquisition constraints and negotiations.
 - Phase 2A is from Sherman Street to Erie Street
 - Future Phase 2B, scheduled for 2016, is from Erie Street to Perry Street.



Location Map



Project area Phase 2(A)



Concept Sketch depicting Phase 2A and Erie Street intersection



Local geology at Phase 2A route



Native Conifers at Phase 2A location



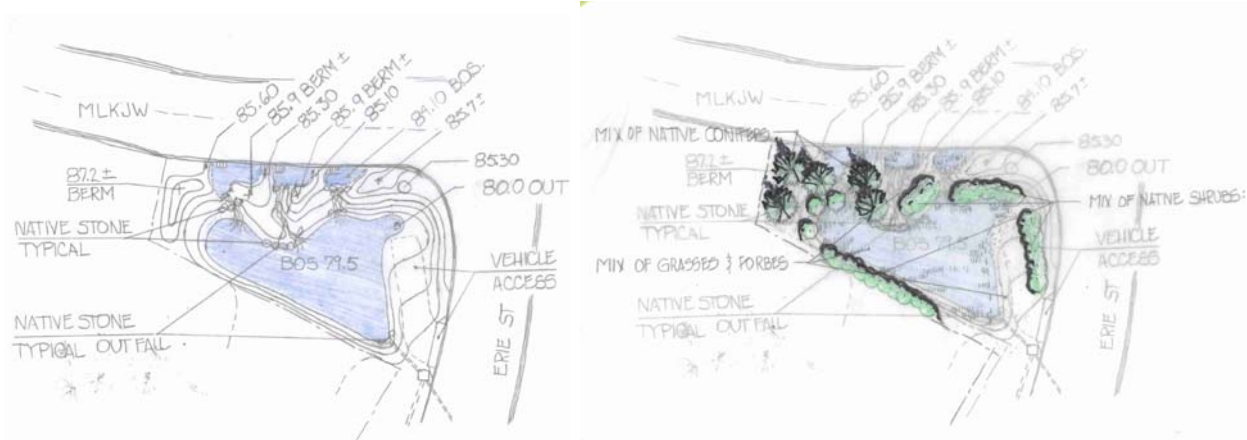
Rock Armor Slope at River North shore



Native trees south edge of Proposed Phase 2A



Brown's Property P2A is located along the bluff at right



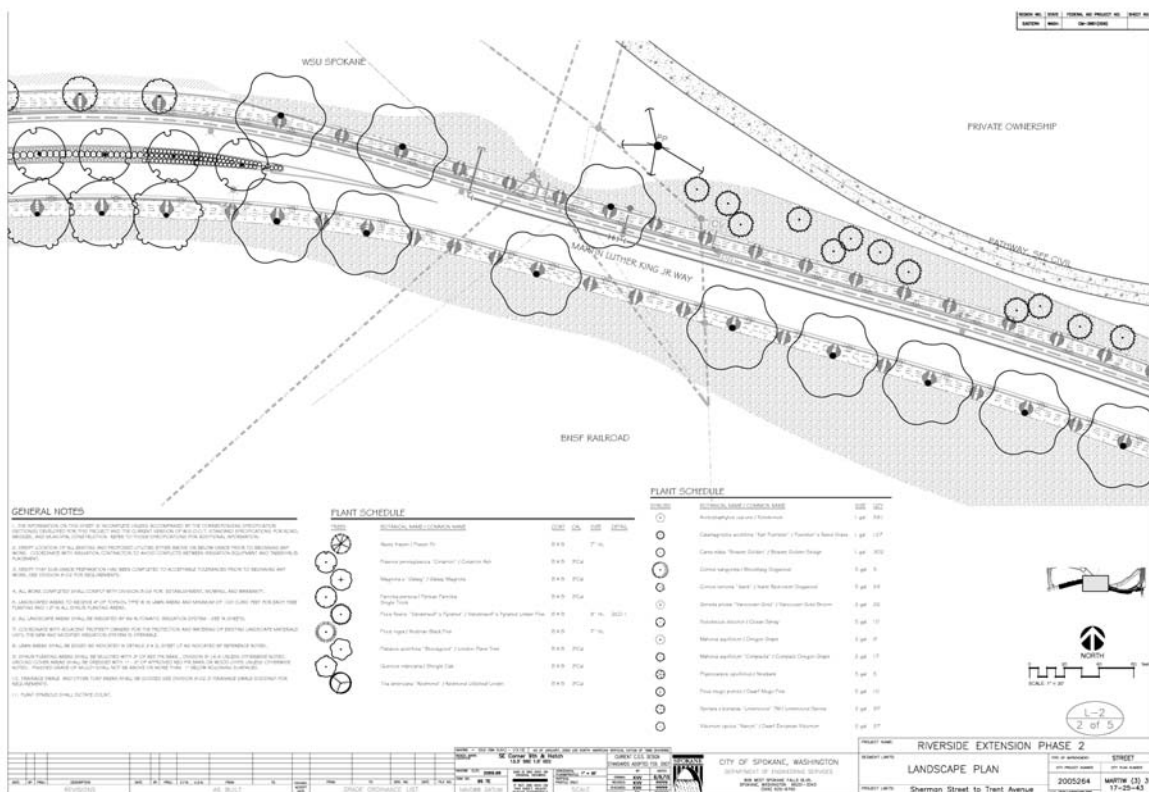
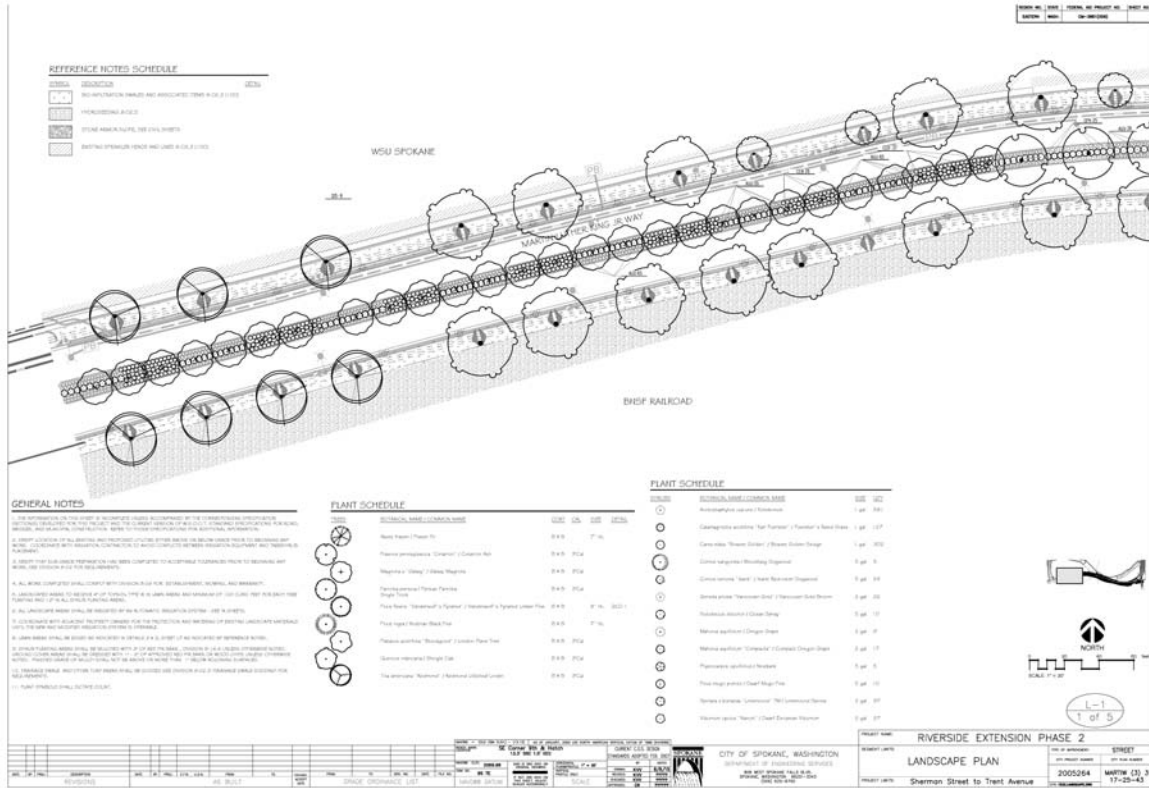
Swale at MLKJW P2A & Erie St. (proposed grading and planting)

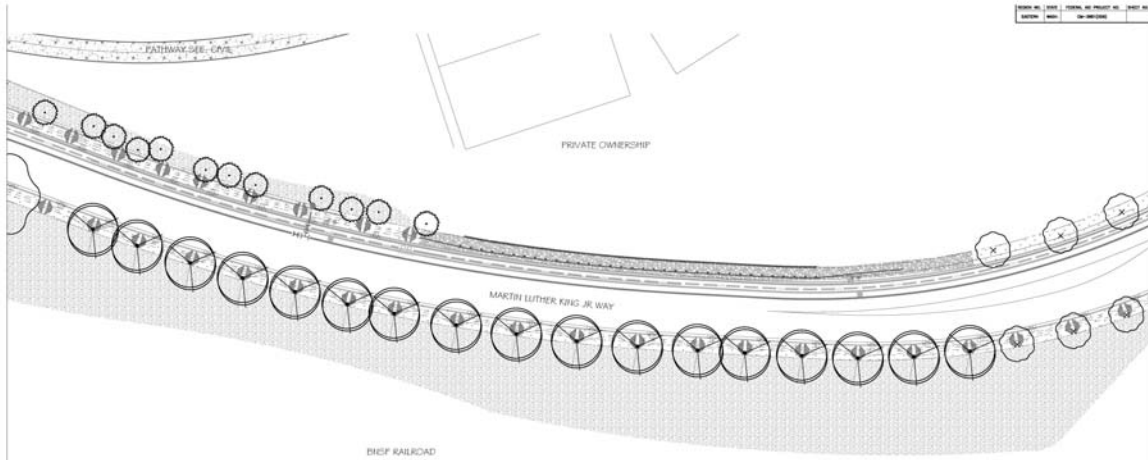
Mix of Conifers: Douglas Fir, Ponderosa Pine

Native Shrubs: Serviceberry, Oregon grape, Mock Orange, Lilac, and Sumac

Mix of grasses and Forbess: Idaho Fescue, Prairie June grass, Lupine, Indian Blanket, Sedges, and Rush.

Proposed Planting Plan, Sheets





GENERAL NOTES

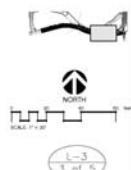
1. THE INFORMATION ON THIS PLAN IS BASED ON RECORDS AND SURVEYS BY THE CONSULTING ENGINEER AND FIELD SURVEY. THE CONSULTING ENGINEER HAS CONDUCTED VISUAL INSPECTIONS OF THE PROJECT AND HAS FOUND THE INFORMATION TO BE ACCURATE AND COMPLETE FOR THE PURPOSES OF THIS PLAN.
2. THE CONSULTING ENGINEER HAS CONDUCTED VISUAL INSPECTIONS OF THE PROJECT AND HAS FOUND THE INFORMATION TO BE ACCURATE AND COMPLETE FOR THE PURPOSES OF THIS PLAN.
3. THE CONSULTING ENGINEER HAS CONDUCTED VISUAL INSPECTIONS OF THE PROJECT AND HAS FOUND THE INFORMATION TO BE ACCURATE AND COMPLETE FOR THE PURPOSES OF THIS PLAN.
4. ALL WORK COMPLETED SHALL BE ACCORDING TO THE STANDARD SPECIFICATIONS FOR ROADWORK AND SHALL BE SUBJECT TO THE STANDARD SPECIFICATIONS FOR ROADWORK AND SHALL BE SUBJECT TO THE STANDARD SPECIFICATIONS FOR ROADWORK.
5. THE CONSULTING ENGINEER HAS CONDUCTED VISUAL INSPECTIONS OF THE PROJECT AND HAS FOUND THE INFORMATION TO BE ACCURATE AND COMPLETE FOR THE PURPOSES OF THIS PLAN.
6. THE CONSULTING ENGINEER HAS CONDUCTED VISUAL INSPECTIONS OF THE PROJECT AND HAS FOUND THE INFORMATION TO BE ACCURATE AND COMPLETE FOR THE PURPOSES OF THIS PLAN.
7. THE CONSULTING ENGINEER HAS CONDUCTED VISUAL INSPECTIONS OF THE PROJECT AND HAS FOUND THE INFORMATION TO BE ACCURATE AND COMPLETE FOR THE PURPOSES OF THIS PLAN.
8. THE CONSULTING ENGINEER HAS CONDUCTED VISUAL INSPECTIONS OF THE PROJECT AND HAS FOUND THE INFORMATION TO BE ACCURATE AND COMPLETE FOR THE PURPOSES OF THIS PLAN.
9. THE CONSULTING ENGINEER HAS CONDUCTED VISUAL INSPECTIONS OF THE PROJECT AND HAS FOUND THE INFORMATION TO BE ACCURATE AND COMPLETE FOR THE PURPOSES OF THIS PLAN.
10. THE CONSULTING ENGINEER HAS CONDUCTED VISUAL INSPECTIONS OF THE PROJECT AND HAS FOUND THE INFORMATION TO BE ACCURATE AND COMPLETE FOR THE PURPOSES OF THIS PLAN.

PLANT SCHEDULE

SYMBOL	SPECIES	SIZE	QTY	NOTES
(Symbol)	Red Pine (Plant No.)	3.00	7	1/4"
(Symbol)	Plantain (Plant No.)	3.00	30	
(Symbol)	Maple (Plant No.)	3.00	30	
(Symbol)	Plantain (Plant No.)	3.00	30	
(Symbol)	Plantain (Plant No.)	3.00	30	
(Symbol)	Plantain (Plant No.)	3.00	30	
(Symbol)	Plantain (Plant No.)	3.00	30	
(Symbol)	Plantain (Plant No.)	3.00	30	
(Symbol)	Plantain (Plant No.)	3.00	30	
(Symbol)	Plantain (Plant No.)	3.00	30	

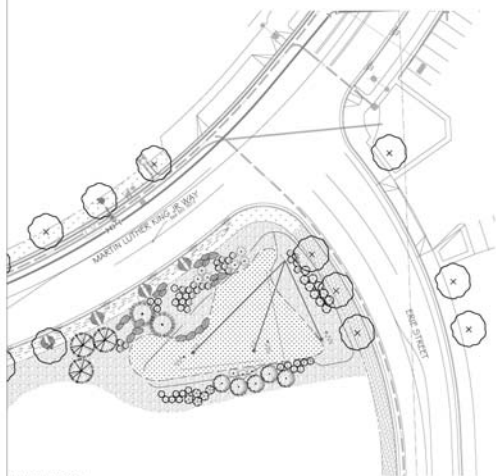
PLANT SCHEDULE

SYMBOL	SPECIES	SIZE	QTY	NOTES
(Symbol)	Plantain (Plant No.)	3.00	30	
(Symbol)	Plantain (Plant No.)	3.00	30	
(Symbol)	Plantain (Plant No.)	3.00	30	
(Symbol)	Plantain (Plant No.)	3.00	30	
(Symbol)	Plantain (Plant No.)	3.00	30	
(Symbol)	Plantain (Plant No.)	3.00	30	
(Symbol)	Plantain (Plant No.)	3.00	30	
(Symbol)	Plantain (Plant No.)	3.00	30	
(Symbol)	Plantain (Plant No.)	3.00	30	
(Symbol)	Plantain (Plant No.)	3.00	30	



PROJECT NAME: RIVERSIDE EXTENSION PHASE 2
 SHEET NAME: LANDSCAPE PLAN
 SHEET NO.: 2005064 MARTIN (3) 3
 SHEET DATE: 01/20/2021

CITY OF SPIKANE, WASHINGTON
 DEPARTMENT OF PUBLIC WORKS
 1000 1/2 AVENUE, SUITE 100
 SPIKANE, WASHINGTON 99179



GENERAL NOTES

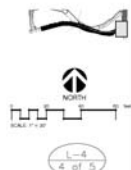
1. THE INFORMATION ON THIS PLAN IS BASED ON RECORDS AND SURVEYS BY THE CONSULTING ENGINEER AND FIELD SURVEY. THE CONSULTING ENGINEER HAS CONDUCTED VISUAL INSPECTIONS OF THE PROJECT AND HAS FOUND THE INFORMATION TO BE ACCURATE AND COMPLETE FOR THE PURPOSES OF THIS PLAN.
2. THE CONSULTING ENGINEER HAS CONDUCTED VISUAL INSPECTIONS OF THE PROJECT AND HAS FOUND THE INFORMATION TO BE ACCURATE AND COMPLETE FOR THE PURPOSES OF THIS PLAN.
3. THE CONSULTING ENGINEER HAS CONDUCTED VISUAL INSPECTIONS OF THE PROJECT AND HAS FOUND THE INFORMATION TO BE ACCURATE AND COMPLETE FOR THE PURPOSES OF THIS PLAN.
4. ALL WORK COMPLETED SHALL BE ACCORDING TO THE STANDARD SPECIFICATIONS FOR ROADWORK AND SHALL BE SUBJECT TO THE STANDARD SPECIFICATIONS FOR ROADWORK AND SHALL BE SUBJECT TO THE STANDARD SPECIFICATIONS FOR ROADWORK.
5. THE CONSULTING ENGINEER HAS CONDUCTED VISUAL INSPECTIONS OF THE PROJECT AND HAS FOUND THE INFORMATION TO BE ACCURATE AND COMPLETE FOR THE PURPOSES OF THIS PLAN.
6. THE CONSULTING ENGINEER HAS CONDUCTED VISUAL INSPECTIONS OF THE PROJECT AND HAS FOUND THE INFORMATION TO BE ACCURATE AND COMPLETE FOR THE PURPOSES OF THIS PLAN.
7. THE CONSULTING ENGINEER HAS CONDUCTED VISUAL INSPECTIONS OF THE PROJECT AND HAS FOUND THE INFORMATION TO BE ACCURATE AND COMPLETE FOR THE PURPOSES OF THIS PLAN.
8. THE CONSULTING ENGINEER HAS CONDUCTED VISUAL INSPECTIONS OF THE PROJECT AND HAS FOUND THE INFORMATION TO BE ACCURATE AND COMPLETE FOR THE PURPOSES OF THIS PLAN.
9. THE CONSULTING ENGINEER HAS CONDUCTED VISUAL INSPECTIONS OF THE PROJECT AND HAS FOUND THE INFORMATION TO BE ACCURATE AND COMPLETE FOR THE PURPOSES OF THIS PLAN.
10. THE CONSULTING ENGINEER HAS CONDUCTED VISUAL INSPECTIONS OF THE PROJECT AND HAS FOUND THE INFORMATION TO BE ACCURATE AND COMPLETE FOR THE PURPOSES OF THIS PLAN.

PLANT SCHEDULE

SYMBOL	SPECIES	SIZE	QTY	NOTES
(Symbol)	Red Pine (Plant No.)	3.00	7	1/4"
(Symbol)	Plantain (Plant No.)	3.00	30	
(Symbol)	Maple (Plant No.)	3.00	30	
(Symbol)	Plantain (Plant No.)	3.00	30	
(Symbol)	Plantain (Plant No.)	3.00	30	
(Symbol)	Plantain (Plant No.)	3.00	30	
(Symbol)	Plantain (Plant No.)	3.00	30	
(Symbol)	Plantain (Plant No.)	3.00	30	
(Symbol)	Plantain (Plant No.)	3.00	30	
(Symbol)	Plantain (Plant No.)	3.00	30	

PLANT SCHEDULE

SYMBOL	SPECIES	SIZE	QTY	NOTES
(Symbol)	Plantain (Plant No.)	3.00	30	
(Symbol)	Plantain (Plant No.)	3.00	30	
(Symbol)	Plantain (Plant No.)	3.00	30	
(Symbol)	Plantain (Plant No.)	3.00	30	
(Symbol)	Plantain (Plant No.)	3.00	30	
(Symbol)	Plantain (Plant No.)	3.00	30	
(Symbol)	Plantain (Plant No.)	3.00	30	
(Symbol)	Plantain (Plant No.)	3.00	30	
(Symbol)	Plantain (Plant No.)	3.00	30	
(Symbol)	Plantain (Plant No.)	3.00	30	



PROJECT NAME: RIVERSIDE EXTENSION PHASE 2
 SHEET NAME: LANDSCAPE PLAN
 SHEET NO.: 2005064 MARTIN (3) 3
 SHEET DATE: 01/20/2021

CITY OF SPIKANE, WASHINGTON
 DEPARTMENT OF PUBLIC WORKS
 1000 1/2 AVENUE, SUITE 100
 SPIKANE, WASHINGTON 99179